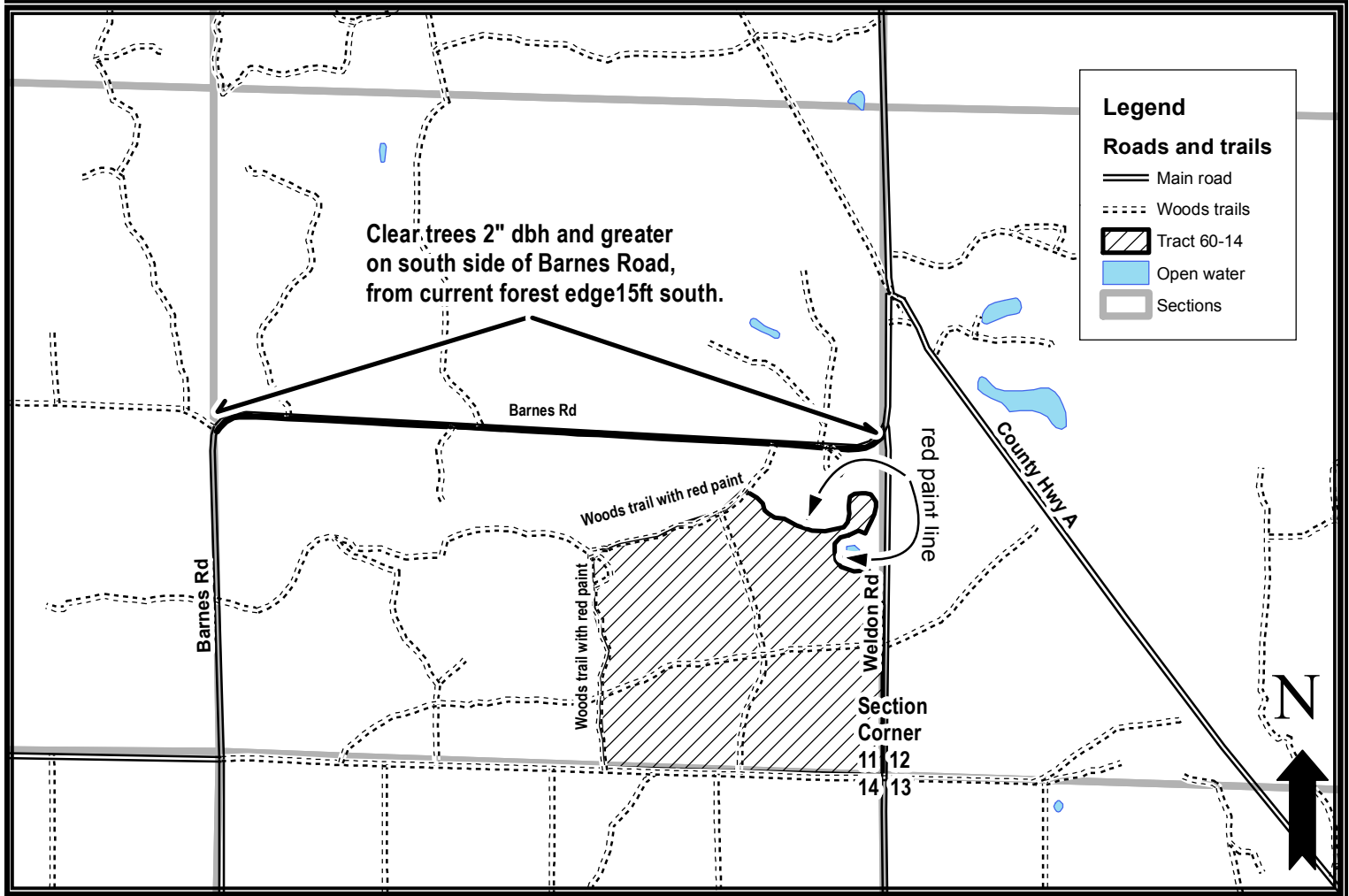


# Bayfield County Forestry and Parks

Forester: LeBouton	Twp: 45N	Range: 09W	Sec: 11	Estimated Volumes:		
Acres: 99	Township: Barnes			Species	4" Cords	Whole Tree Tons
Soil: Sand	Compartment: 167, 160	Stand: 25,25		Red pine	600*	1670
Topography: Rolling	Tract Number: 60-14	Reforestation Code: Artificial		White pine	640**	1740
Scale: 4" = 1 mile	Contract Number:			Scrub oak	10	30

\*Average diameter = 17 inches. Includes approx. 20 cords of jack pine  
 \*\*Average diameter=20 inches.



## Harvest requirements:

- This is a ticket sale.
- Sale boundaries follow Weldon Rd, and woods road, and red paint lines.
- This is an overstory removal to prepare site for planting. See average diameters above.
- Harvest all trees 2 inches diameter at breast height and larger.
- Sale includes a Right Of Way clearing on the south shoulder of Barnes Road, as indicated on map. Contact Sale Administrator before beginning this portion of the sale. Clear trees 2" diameter at breast height and larger along a 15-ft-wide corridor from current forest edge south.
- Do not damage any survey monumentation.
- Prior to moving equipment on to or off the sale area, scrape or brush debris and soil from exterior surfaces.
- All roads are in place. This contract requires county authorization for all road/landing construction and places a number of other requirements on road construction and closure.
- Decking of wood along town roads will not be allowed without permission of Bayfield County.
- Harvested pine cannot be kept on the Bayfield County Forest for more than three weeks from May 1<sup>st</sup> to August 31<sup>st</sup>.