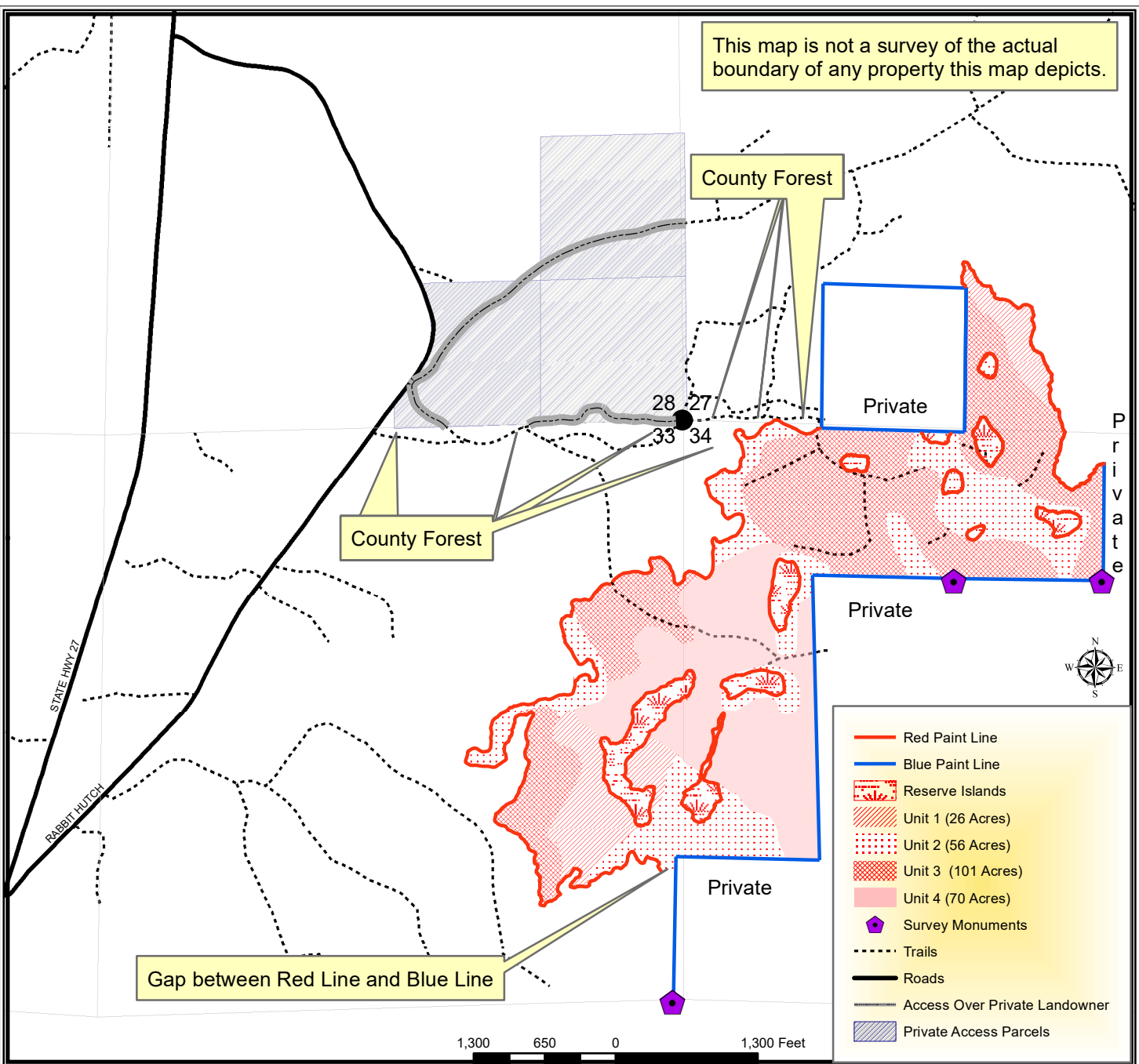


# Bayfield County Forestry & Parks Department

Forester: Caleb E. Brown		Compartment: 192		Stand: 2, 6, 12, 13, 15, 16, 28		Tract Number: <b>02-20</b>
Twp: T43N	Range: R9W	Sec: 27, 33, & 34	Township: Barnes	Contract Number:		
Topography: Gentle Rolling & Flat			Reforestation Code:	Soil: Silt Loam, Sandy Loam, Loamy Sand, & Muck		Acres: <b>253</b>

Estimated Volumes			*Approximatley 30% Red Maple, 28% Hard Maple, 21% Ash, 13% Yellow birch, 6% Basswood, 1% Aspen, and 1% Other Hardwoods **Approximatley 73% Tamarack, 14% Black Spruce, 12% Balsam Fir & 1% Other Conifer	
Species	4" Roundwood (Cords)	Whole Tree (Tons)		Sawlogs (MBF)
Mixed Hardwoods*	5308	16513	273	<b>-Sold as 3 Year Contract</b> -40% of Sale (101 Acres) Dry or Frozen Operations -60% of Sale (152 Acres) Frozen Operations Only -Private Road Access into Sale is Frozen Operations Only
Tamarack**	257	821	-	



## TRACT 02-20 – SUPPLEMENTAL REQUIREMENTS

The following terms and conditions supplement those provided in the Bayfield County Timber Sale Contract.

### A. PRESCRIPTION:

1. Harvest unit 1 has a clear-cut reserves harvest prescription with an estimated average residual basal area of 15ft<sup>2</sup>.
2. Harvest unit 2 has a shelterwood prescription with an estimated average residual basal area of 75ft<sup>2</sup>.
3. Harvest unit 3 has a seed tree harvest prescription with an estimated average residual basal area of 11 ft<sup>2</sup>.
4. Harvest unit 4 has an overstory removal harvest prescription with an estimated average residual basal are of 31 ft<sup>2</sup>.

### B. HARVEST REQUIREMENTS:

1. In unit 1 leave all cedar, hemlock, and red oak along with yellow birch, balsam fir, and black spruce 4 inches and less. Harvest all other stems 2 inches and greater.
2. In unit 2 leave all cedar, hemlock, and red oak. Harvest all other stems 2 inches and greater.
3. In unit 3 and 4 leave all cedar, hemlock, and red oak along with hard maple and yellow birch 4 inches and less.
4. Reserve islands are encircled by red paint line. Do not harvest inside reserve islands.

### C. HARVEST AND OPERATIONAL REQUIREMENTS AND SEASONAL RESTRICTIONS:

1. Unit 1 and 2 are winter/frozen ground only for operability (as determined by the county).
2. Unit 3 and 4 are winter/frozen or dry ground only for operability (as determined by the county).
3. **Access into the sale across non-county property is to occur during winter/frozen ground conditions only (as determined by the county).**
4. **No paint boundary exists between the harvest units.** The difference between unit 1 and 2 can be determined by dramatic shifts from conifer to non-conifer species. The difference between units 1 & 2 (swamp units) and units 3 & 4 (upland units) can be determined via dramatic timber type changes and changes in elevation. The difference between units 3 and 4 is unit 3 has evidence of past management activity and unit 4 has no evidence of past management. Regardless units 3 & 4 have the same harvest requirements.
5. In the very bottom of Unit 2 between the red and blue paint lines there is a gap (roughly 100 ft) with no red boundary paint. Continue harvesting due east of last red painted tree until the blue paint line is reach. See timber sale map.
6. Sale boundaries include red paint line and blue paint line (see aerial map).
7. The blue line indicates private property. No equipment or felled trees may cross the line.
8. If harvest will utilize the whole tree, 1 in 10 tops must be left scattered throughout the sale.
9. Do not damage any survey monumentation.

### D. ACCESS AND ROADS:

1. Decking of wood along town roads will not be allowed without permission from Bayfield County.
2. Access through sale in part runs through private property with different but similar terms as county roads (see attached Road Access Map For Contractor Tract #02-20).

### E. OTHER:

1. This sale will be sold as a three (3) year contract. Contract extensions are not guaranteed.
2. To comply with Best Management Practices for Invasive Species: Prior to moving equipment onto or off the sale area, scrape or brush soil and debris from exterior surfaces to the extent practical.

