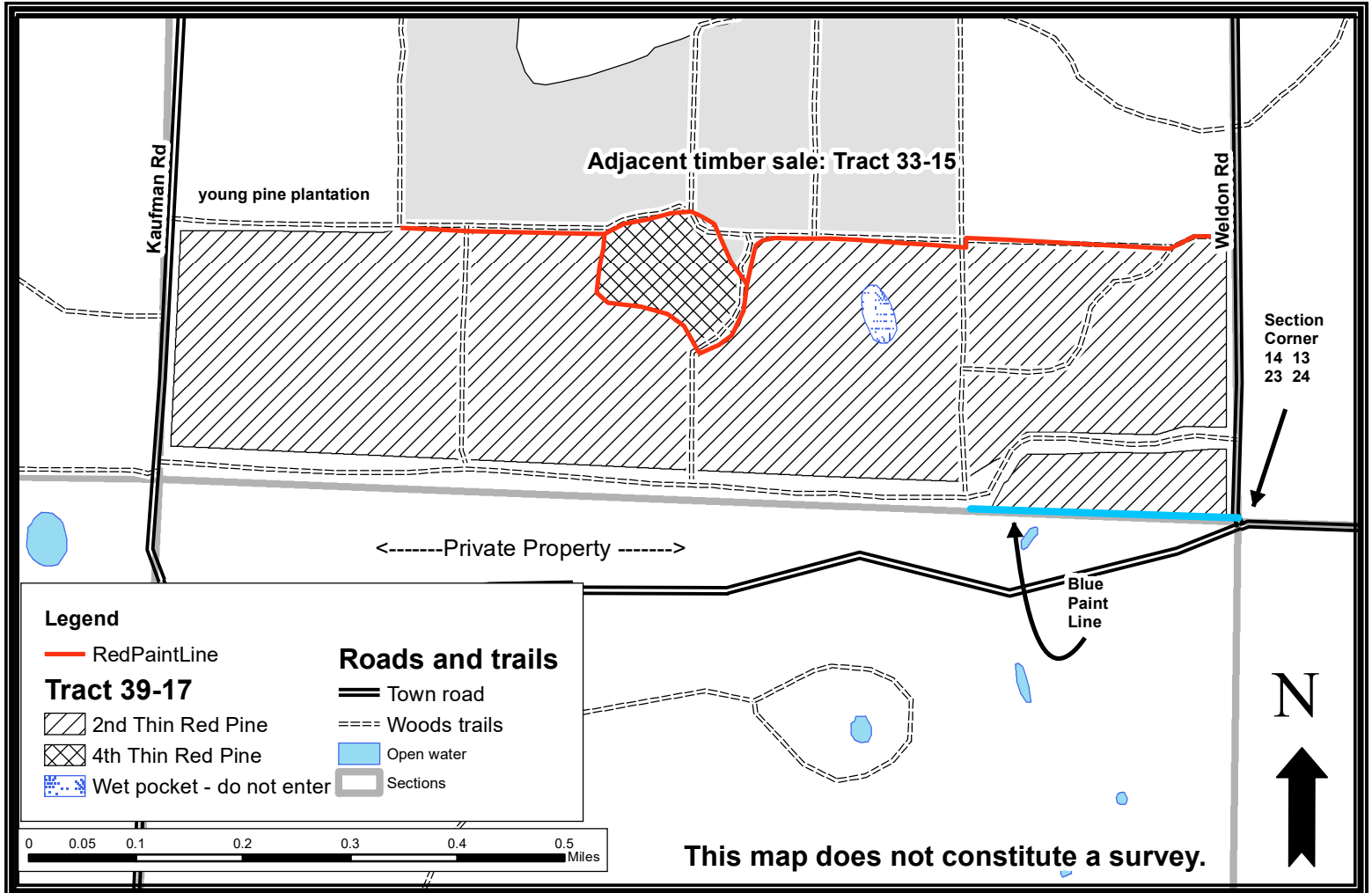


Bayfield County Forestry and Parks

Forester: Latvala/LeBouton			Acre: 136	Estimated Volumes:		
Twp: 45N	Range: 9W	Section: 14	Compartment: 167	Species	4" cords	Whole tree tons
Township: Barnes			Stand: 4 & 5	Red pine*	1960	6720
Soil: Sand		Reforestation Code: N/A	Tract Number: 39-17	Aspen	80	200
Topography: Gently Rolling			Contract Number:	*includes 3% jack pine		



Harvest requirements:

- This timber sale is being sold on a ticket scale basis.
- The majority of this sale is second-thin red pine with an average diameter of 10 inches. Seven acres of fourth-thin red pine are included, with an average diameter of 14 inches.
- Sale boundaries are red paint lines; one blue paint line; forest roads; and a young red pine plantation on north-west side.
- Cut all trees marked with orange paint, and cut all merchantable aspen greater than 4" diameter at breast height.
- No damage to residual stand will be tolerated.
- Do not cut snags, except for those that are a safety hazard to logging operations.
- Harvested pine cannot be kept on the Bayfield County Forest for more than three weeks from May 1st through August 31st.
- Do not damage any survey monumentation.
- To comply with Best Management Practices for Invasive Species, prior to moving equipment on to or off the sale area, scrape or brush debris and soil from exterior surfaces.
- This contract requires county authorization for all road/landing construction and places a number of other requirements on road construction and closure.
- Decking of wood along town roads will not be allowed without permission of Bayfield County.