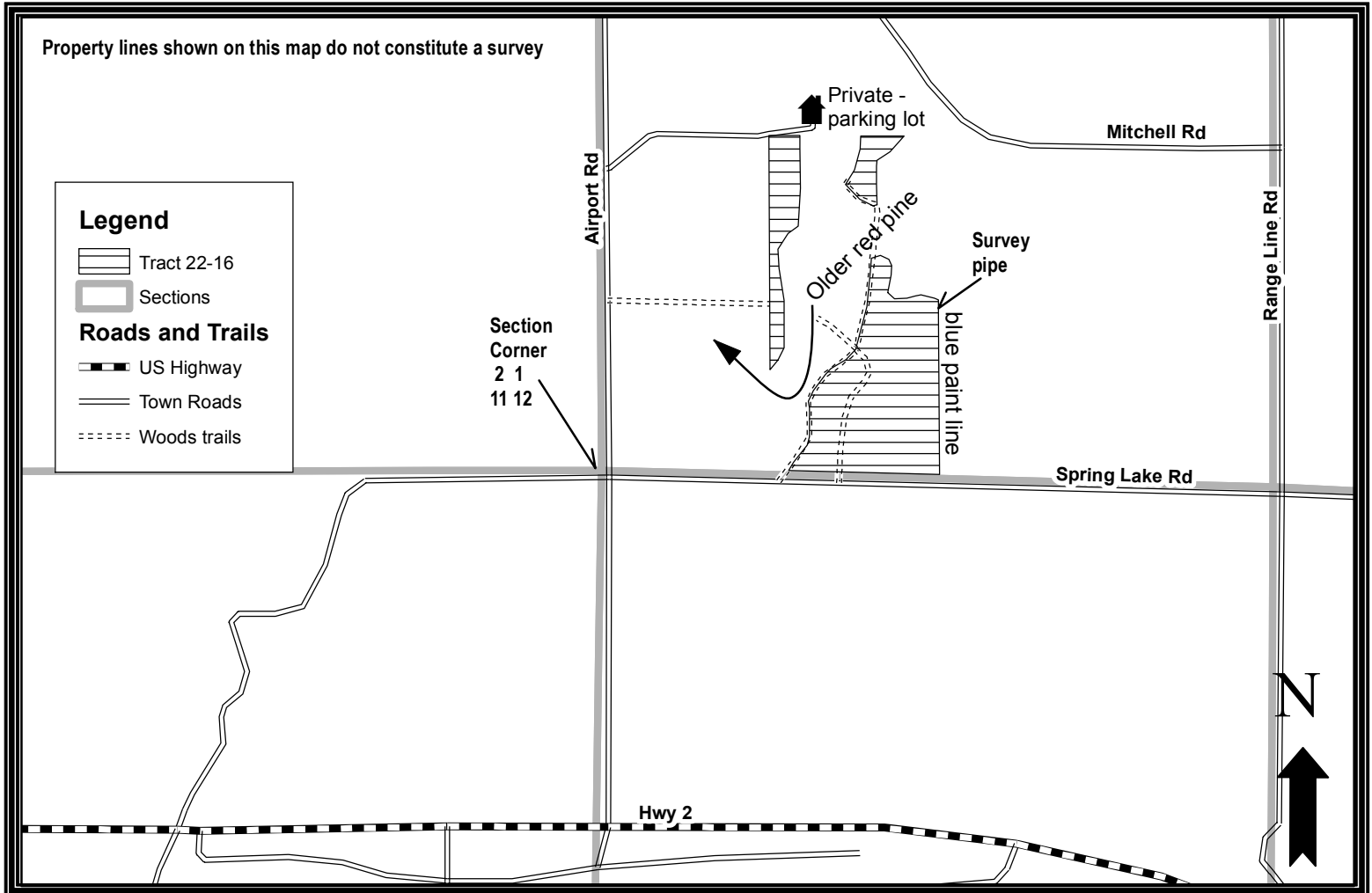


# Bayfield County Forestry and Parks

Forester: LeBouton	Twp: 47N	Range: 09W	Sec: 1	Estimated Volumes:				
Acres: 37	Township: Hughes - north			<table border="1"> <tr> <th>Species</th> <th>Cords</th> </tr> <tr> <td>Red Pine</td> <td>175*</td> </tr> </table>	Species	Cords	Red Pine	175*
Species	Cords							
Red Pine	175*							
Soil: Sand	Compartment: 106	Stand: 24	*Average diameter = 7 inches, Includes approximately 35 cords of jack pine					
Topography: Flat	Tract Number: 22-16	Reforestation Code: N/A (Thinning)						
Scale: 4" = 1 mile	Contract Number:							



## Harvest requirements:

- This is a ticket sale.
- This is a first thinning in red pine with average diameter of 7 inches.
- Cut all red pine in every third row (cut one row, leave two rows.) Cut rows are not marked with paint. Logger will determine cut rows to the satisfaction of Sale Administrator.
- Cut all jack pine 2 inches DBH and larger within the cut rows.
- Sale boundaries are roads, abrupt cover type changes, and a blue paint line as indicated on map.
- Do not damage survey monuments.
- Machinery and cut trees may not cross blue paint line onto private land.
- Prior to moving equipment on to or off the sale area, scrape or brush debris and soil from exterior surfaces.
- All roads are in place. This contract requires county authorization for all road/landing construction and places a number of other requirements on road construction and closure.
- Decking of wood along town roads will not be allowed without permission of Bayfield County.
- Harvested pine cannot be kept on the Bayfield County Forest for more than three weeks from May 1<sup>st</sup> to August 31<sup>st</sup>.