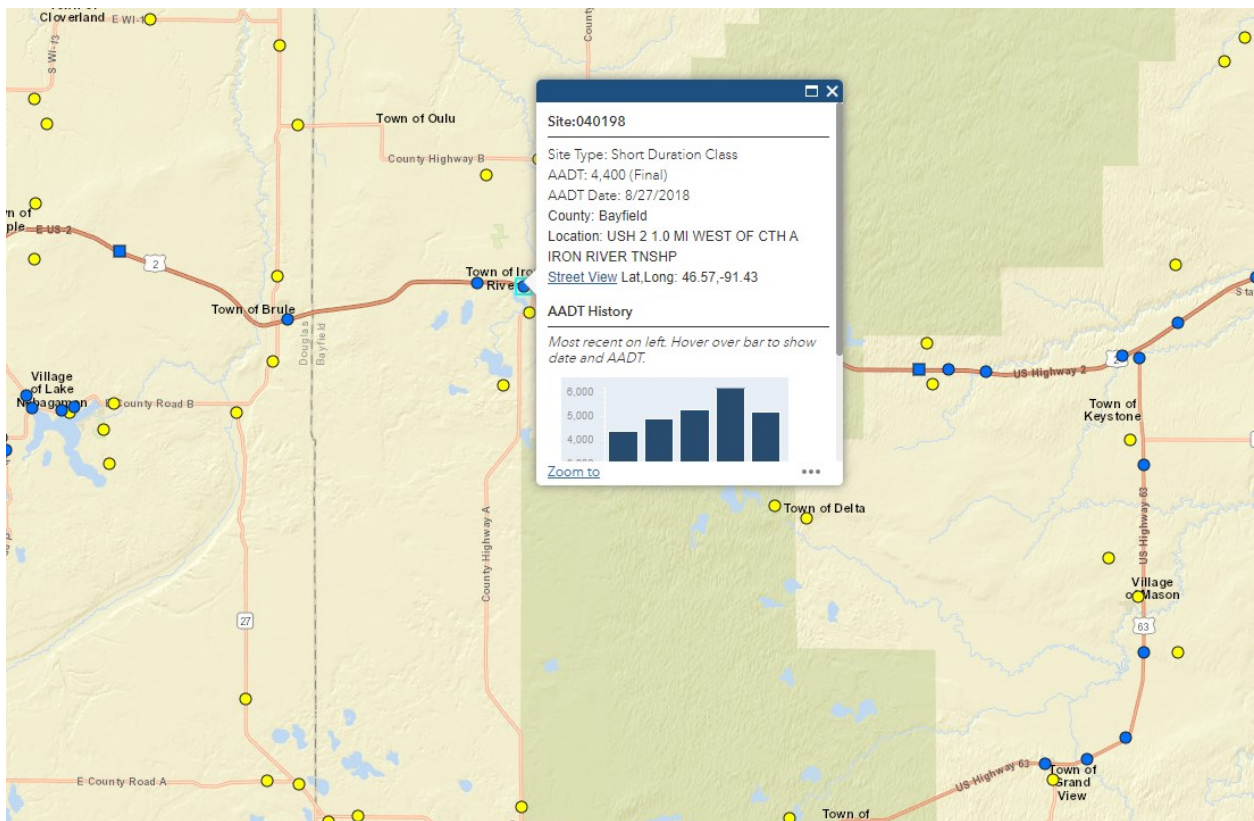


WISCONSIN DOT TRAFFIC COUNTS

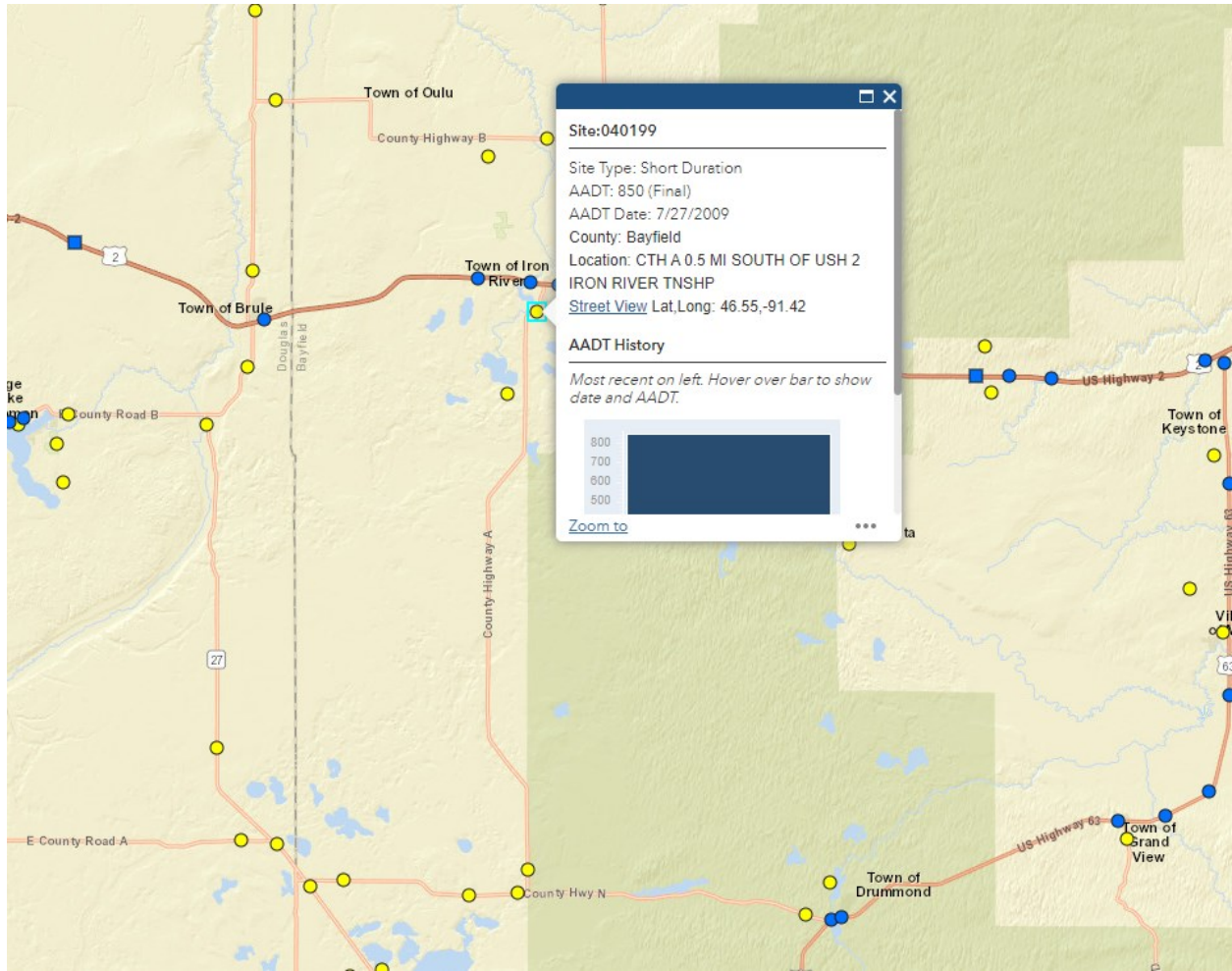
COUNTY HIGHWAY A AND N

US HIGHWAY 2 AND STATE HIGHWAY 27

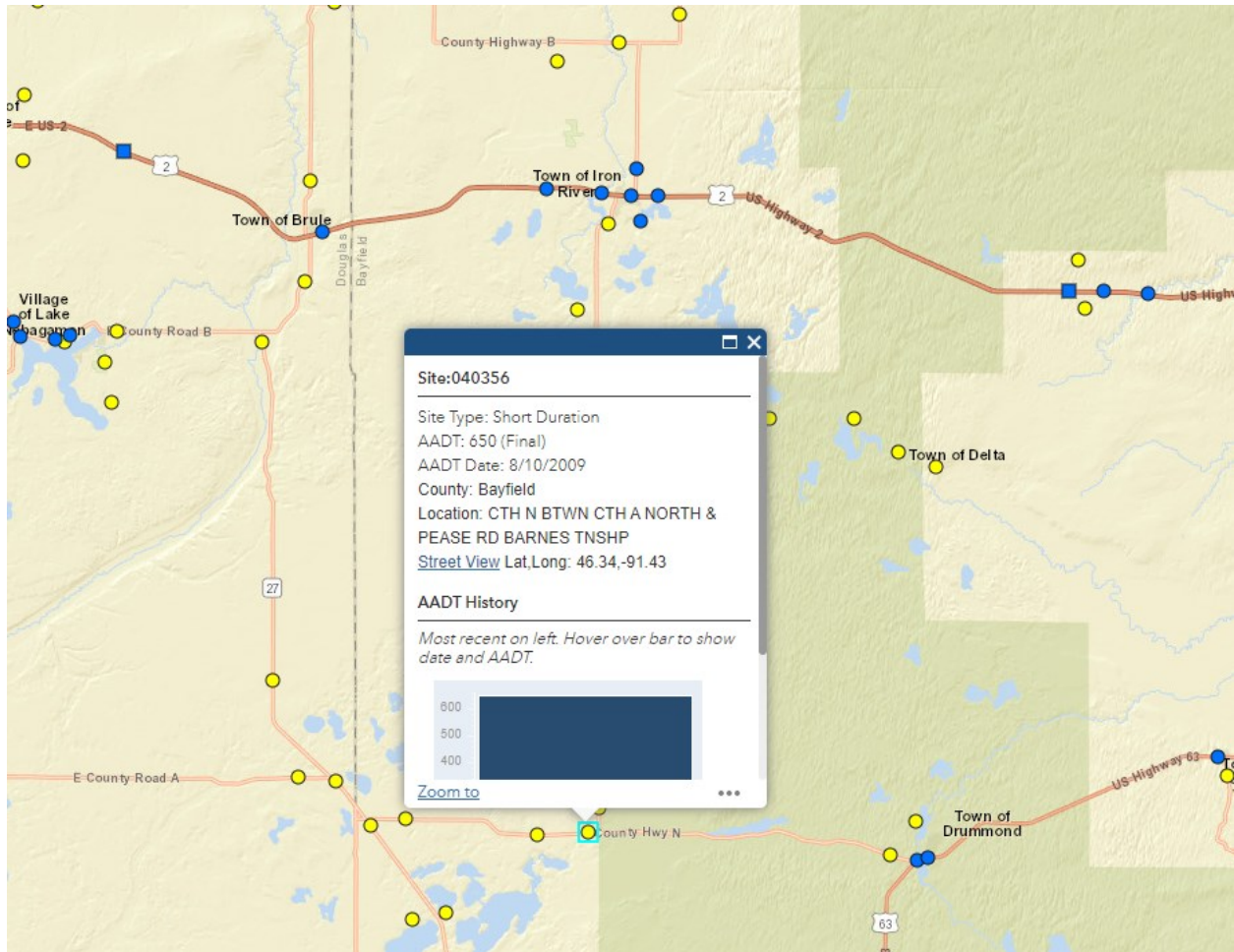
<https://wisdot.maps.arcgis.com/apps/webappviewer/index.html?id=2e12a4f051de4ea9bc865ec6393731f8>



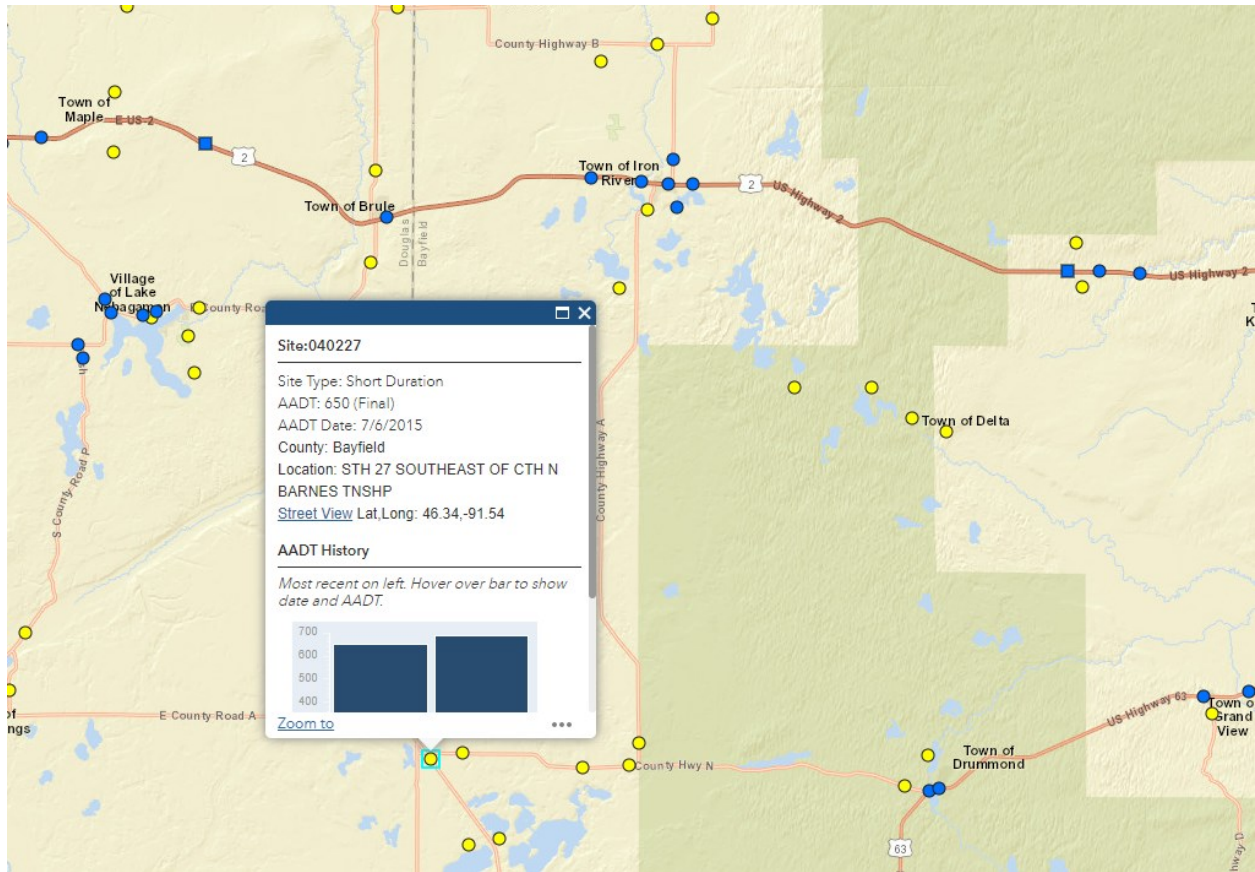
Iron River, WI 4400 AADT



County Highway A: 850 AADT



COUNTY HIGHWAY N: 650 AADT



STATE HIGHWAY 27, AADT 650