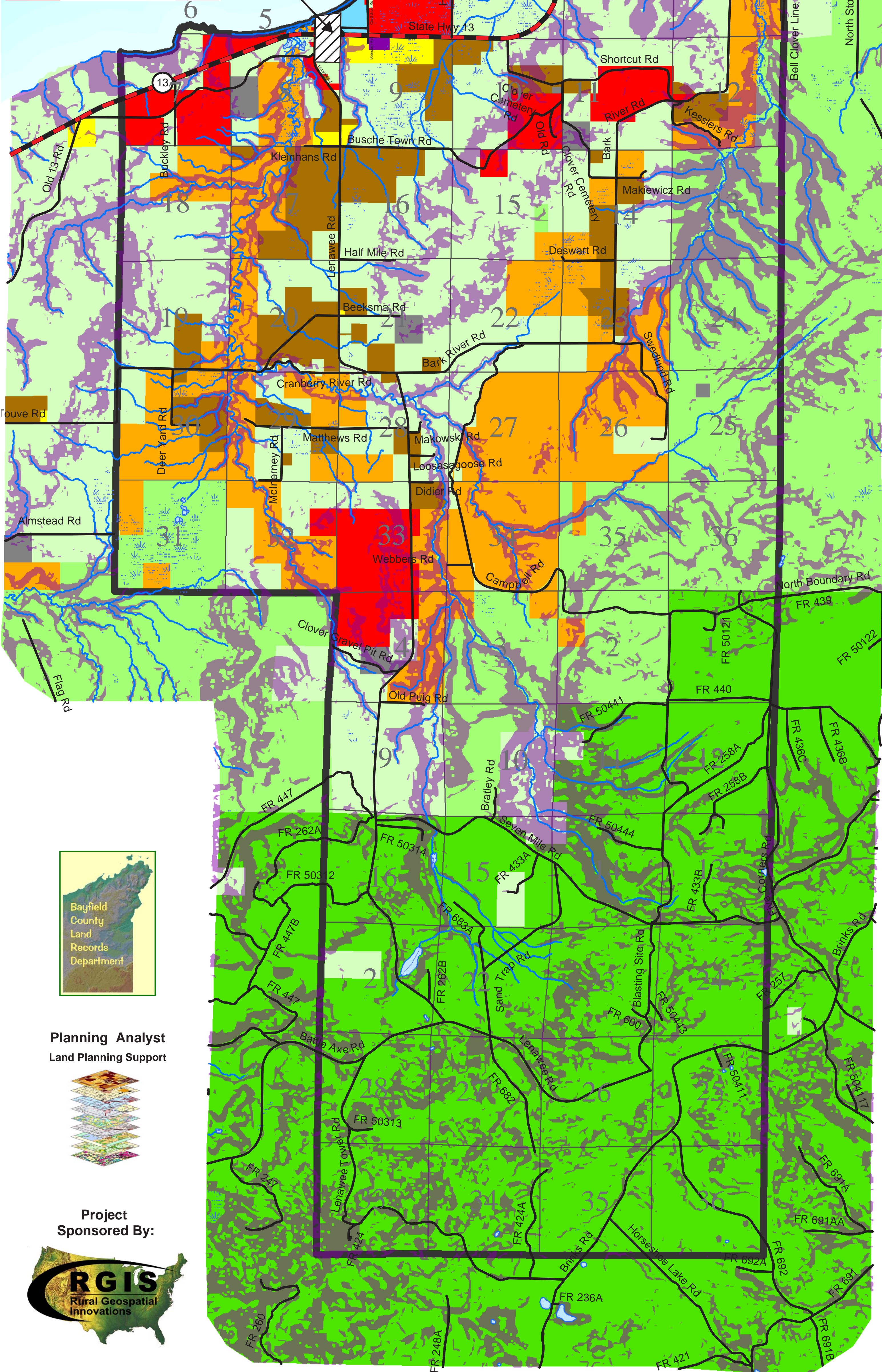
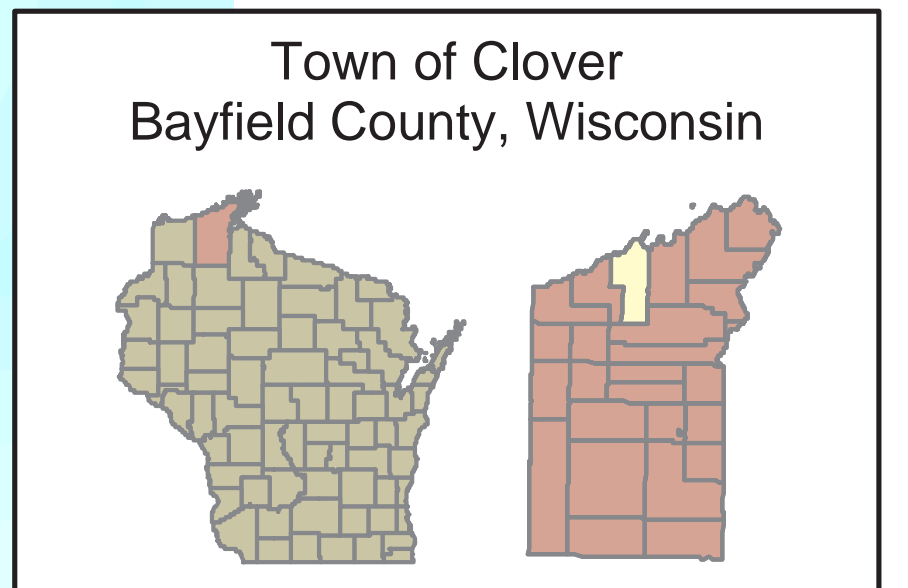
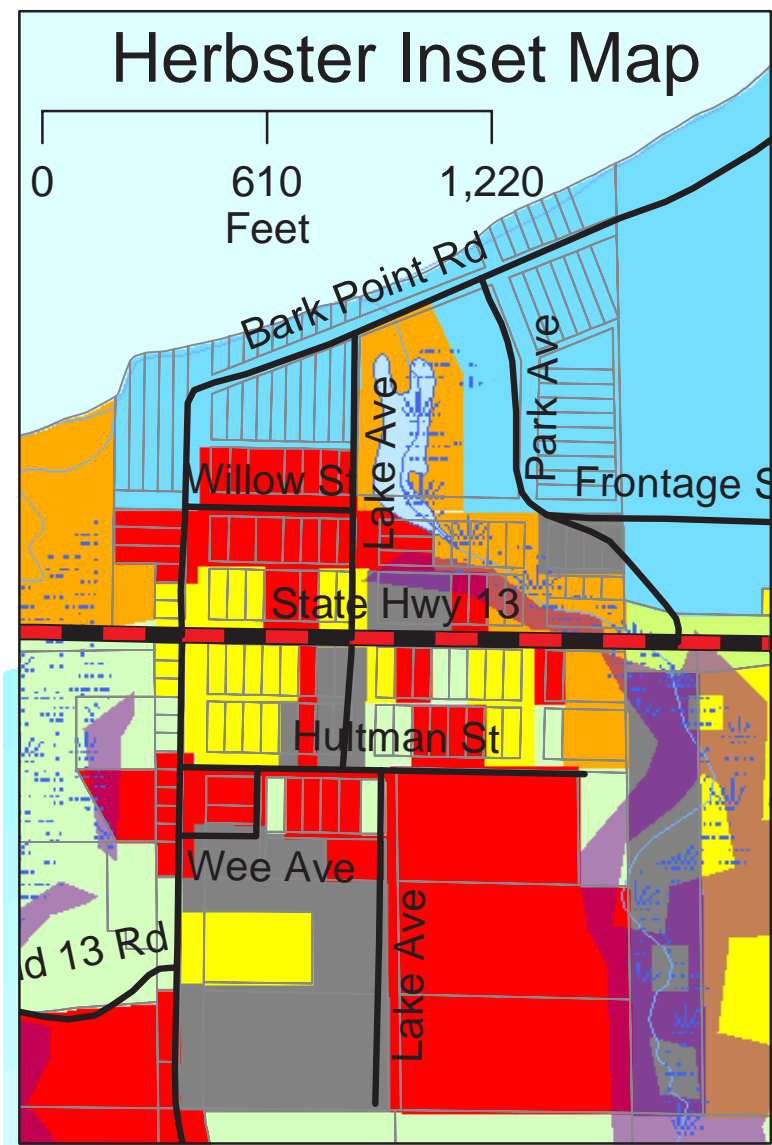


# Future Land Use Pattern: 2023

## Town of Clover



### Map Description

This map displays the desired future land use pattern for the Town of Clover out 20 years to 2023. The Town of Clover Land Use Planning Committee delineated and adopted the initial pattern on September 28, 2002, and the Town of Clover Plan Commission adopted this revised pattern on August 16, 2003.

The initial map was the final result of a four month future land use allocation process conducted by the Planning Committee, UWEX and LICGF.

### Legend

- Land Use Class**
- Residential
  - Commercial
  - Industrial
  - Municipal/Institutional
  - Recreational
  - Agricultural
  - State Conservancy
  - Private Forest
  - County Forest
  - Federal Forest
- Other Map Features**
- Lakes
  - Rivers
  - Wetlands
  - Slopes > 12.5%
  - State Highway
  - Town Road
  - Sections

### Sources

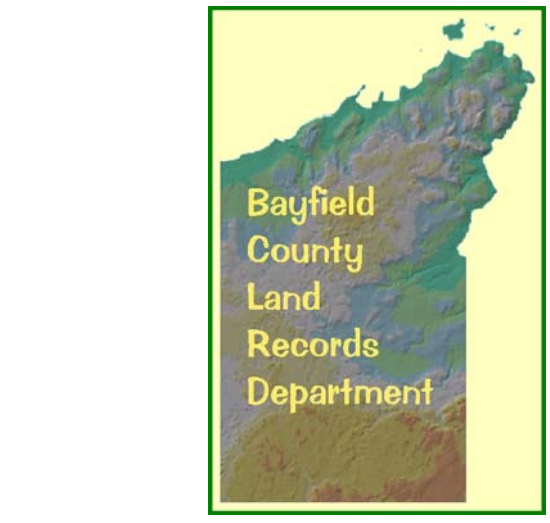
Future land uses derived using ownership parcels from the Bayfield County Land Records Department.

Parcels originally attributed with current land uses. Current land uses derived from a windshield survey conducted by the Planning Committee in March 2002.

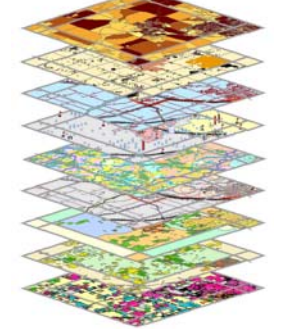
Future land uses allocated by the Planning Committee using PLACE-IT software created by UW-Madison, LICGF.

Initial map created by Douglas Miskowiak on October 8, 2002 using ArcMap 8.2.

Map revised in September 2003 by Bayfield County Land Records Department based on information provided by the Town of Clover Plan Commission.



Planning Analyst  
Land Planning Support



Project Sponsored By:

