

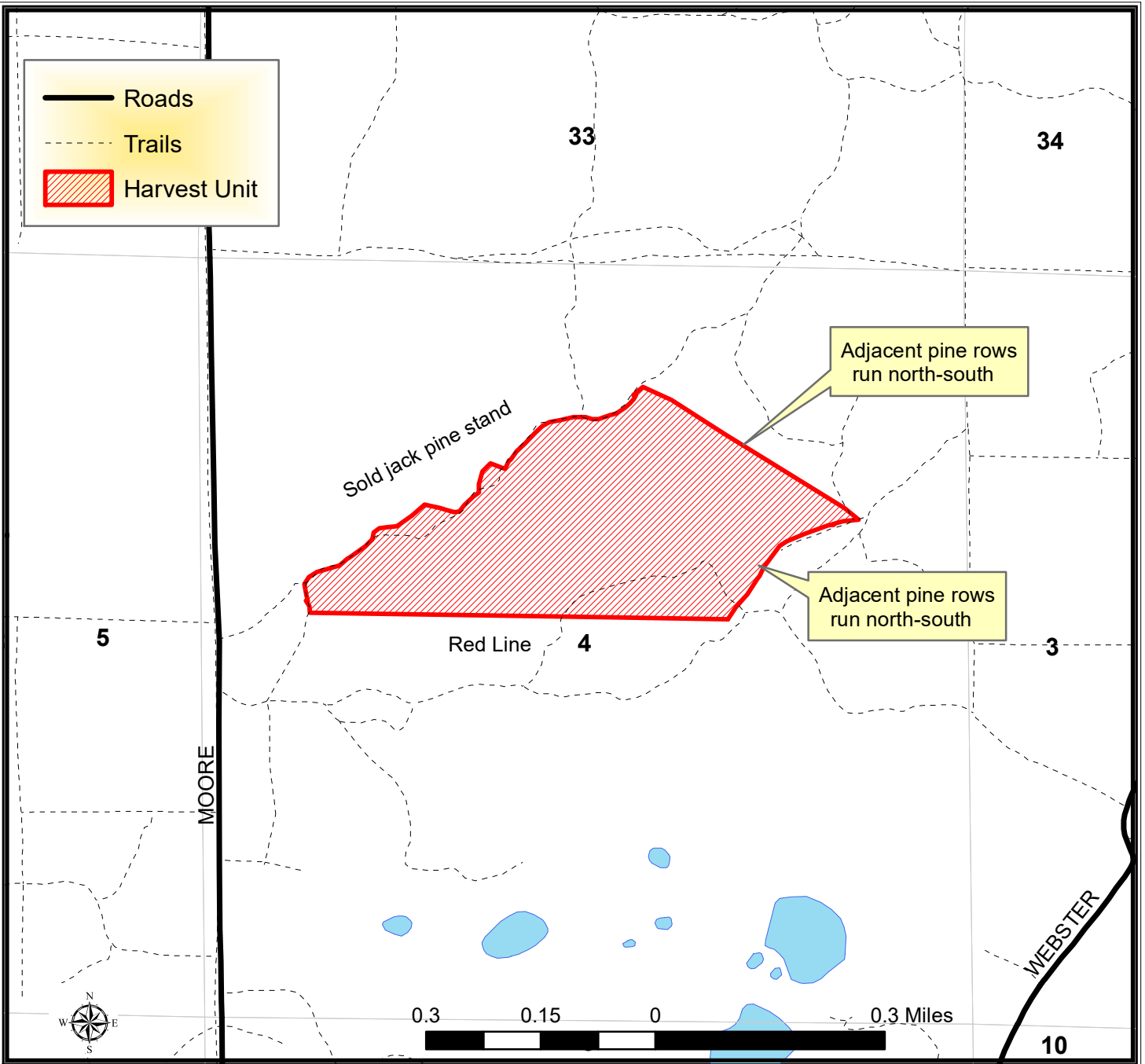
# Bayfield County Forestry & Parks Department

|                      |           |        |                        |                  |                            |
|----------------------|-----------|--------|------------------------|------------------|----------------------------|
| Forester: Mike Amman |           |        | Compartment: 144       | Stand: 61        | <b>Tract Number: 10-23</b> |
| Twp: N45             | Range: 9W | Sec: 4 | Township: Barnes       | Contract Number: |                            |
| Topography: Flat     |           |        | Reforestation Code: PJ | Soil: Sand       | <b>Acres: 79</b>           |

| Estimated Volumes |                   |                     |               |
|-------------------|-------------------|---------------------|---------------|
| Species           | Whole Tree (Tons) | 4" Roundwood (Tons) | Sawlogs (MBF) |
| Red Pine          | 7770              | 5771                |               |
|                   |                   |                     |               |
|                   |                   |                     |               |
|                   |                   |                     |               |
|                   |                   |                     |               |

Red Pine avg. DBH 10 inches

|                                      |
|--------------------------------------|
| <b>Special Restrictions:</b><br>None |
|--------------------------------------|



## TRACT 10-23 – HARVEST REQUIREMENTS

The following terms and conditions supplement those provided in the Bayfield County Timber Sale Contract.

### A. PRESCRIPTION:

- Harvest unit has a clearcut prescription with an estimated average residual basal area of 0 ft<sup>2</sup>.

### B. HARVEST REQUIREMENTS:

- Harvest all trees 2" in diameter and greater within the sale area.

### C. OPERATIONAL REQUIREMENTS AND SEASONAL RESTRICTIONS:

- Sale boundaries consist of red line on the south line. The north boundary is adjacent to a sold mature jack pine stand which may be harvested by the time this sale is cut. The eastern boundaries border mature red pine where the rows run north-south. There is old red line on trees within this stand that need to be harvested. Harvest all pine up until the rows run north-south on the eastern portion of this sale
- Fell all standing non-merchantable dead and dying stems. Process all felled stems into standard 100-inch lengths and scatter. Process all greater than 8-inch DBH non-merchantable downed stems into standard 100-inch lengths and scatter.
- Conduct harvest so that the slash, limbs, and tops from every two passes are piled by the processor in a single common windrow that can be burned by the County after the sale. Do not operate equipment on this windrow. See contract administrator for further information.
- Harvested pine cannot be kept on the Bayfield County Forest for more than three weeks from May 1<sup>st</sup> to August 31<sup>st</sup>.
- Cut all snags.
- If harvest will utilize the whole tree, 1 in 10 tops must be left scattered throughout the sale.

### D. ACCESS AND ROADS:

- This contract requires County authorization for all road/landing construction and places a number of other requirements on road construction and closure.
- Decking of wood along town roads will not be allowed without permission from Bayfield County.

### E. OTHER:

- To comply with Best Management Practices for Invasive Species: Prior to moving equipment onto or off the sale area, scrape or brush soil and debris from exterior surfaces to the extent practical.
- Do not damage any survey monumentation.