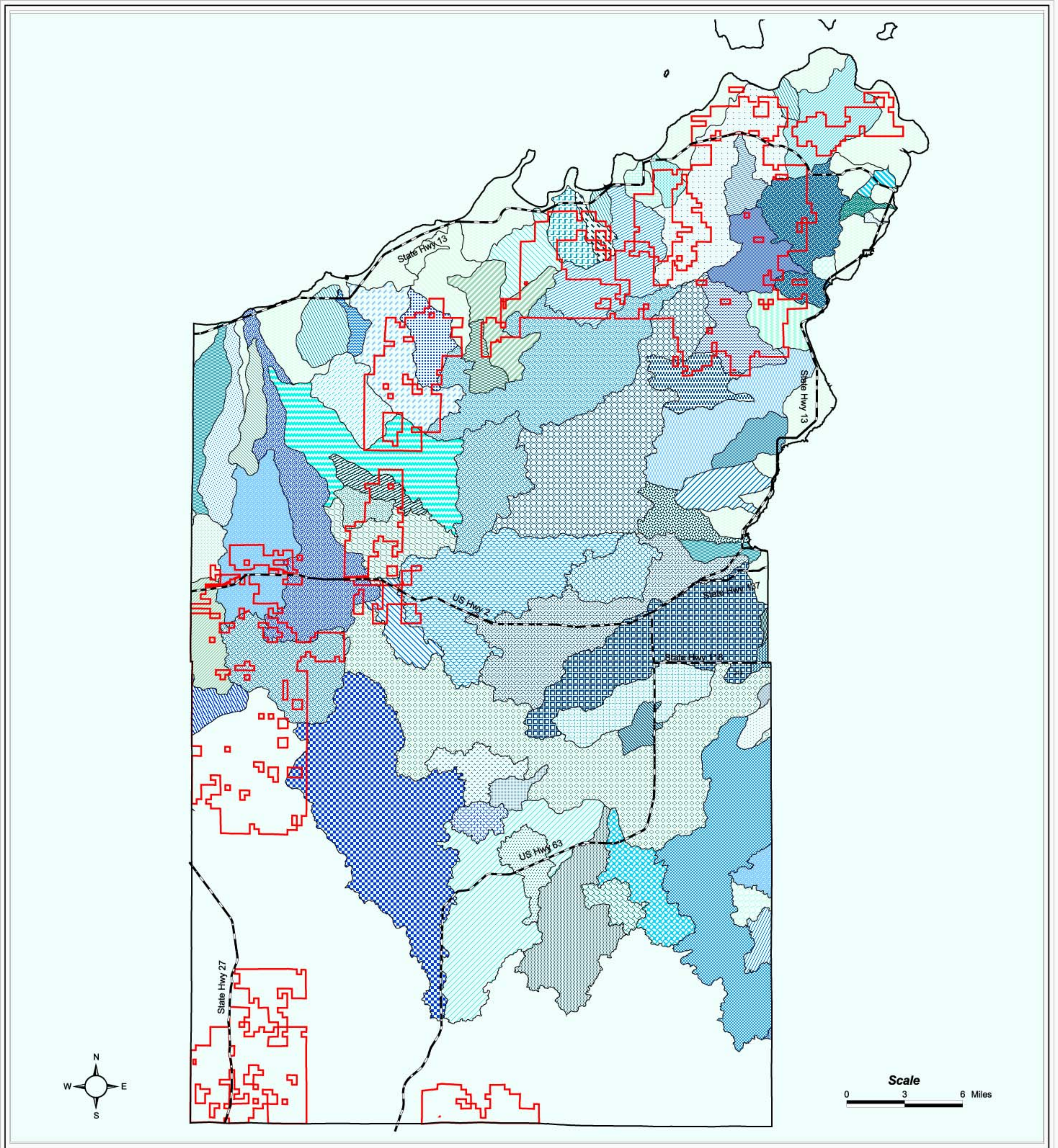


Bayfield County Forest Lake Superior Watersheds



Lake Superior Watersheds

- | | | | | | |
|--|---|--|--|--|---|
| <ul style="list-style-type: none"> Bark River Bay City Creek Bayfield Peninsula Northwest Watershed Bayfield Peninsula Northwest Watershed Sink Bayfield Peninsula Southeast Watershed Bayfield Peninsula Southeast Watershed Sink Beartrap Creek Birch Run Boise Brule River Bono Creek Brickyard Creek Brunsweller River Chicago Creek Cranberry River Crooked Lake DeChamps Creek | <ul style="list-style-type: none"> Deer Creek East Fork Cranberry River East Fork Flag River East Fork Iron River Eighteen Mile Creek Fish Creek Fish Creek Sink Flag River Four Mile Creek Hanson Creek Hawkins Creek Iron River Iron River Sink Jader Creek Johnson Creek Kolin Creek Lake Superior Tributary | <ul style="list-style-type: none"> Larson Creek Lenawee Creek Little Beartrap Creek Little Boise Brule River Little Souix River Long Lake Branch Lost Creek Number One Lost Creek Number Three Marengo River Muskeg Creek North Fish Creek North Pikes Creek Onion River Pikes Creek Pine Creek Pre-emption Creek Racket Creek | <ul style="list-style-type: none"> Raspberry River Red Cliff Creek Reefer Creek Resch Creek Rock Creek Rocky Run Sand River Saxine Creek Schacte Creek Schramm Creek Siskiwit River Souix River South Fish Creek Spring Creek Squaw Creek Star Lake Thompson Creek | <ul style="list-style-type: none"> Townsend Creek Trask Creek Twentymile Creek West Fork Cranberry River Whisky Creek White River White River Sink White River Sink White River Watershed Whittlesey Creek | <p>Other Symbols</p> <ul style="list-style-type: none"> Bayfield County Forest Bayfield County Federal & State Roads |
|--|---|--|--|--|---|